

Anti-Ubiquitin Mouse mAb (P4D1)

Cat. # Y3011 Y3012 Y3013

Also Known as:	Anti-Ub Antibody
Quantity:	Y3011 (100 μ l); Y3012 (2x100 μ l); Y3013 (5x100 μ l)
Isotype:	Mouse IgG1
Clone	P4D1
MW:	~150 kDa
Species:	Human, Mouse, Rat, Bovine, etc.
Immunogen:	Full length bovine ubiquitin
Buffer	50 mM PIPES, Ph7.0, 1% sucrose, 0.5% dextran, 0.02% azide and 50% glycerol.
Specificity:	Recognizes mono and polyubiquitinated proteins, free polyubiquitin chains and ubiquitin in a wide range of species. This antibody recognizes different types of polyubiquitin chains.
Purification:	Protein G affinity chromatography
Applications:	WB and IF
Quality Assurance:	Guaranteed for detecting 5 ng endogenous ubiquitin or polyubiquitin chains in whole cell or tissue lysates at an antibody dilution of 1:1,000.
Recommended	WB (with ECL): 1:1000 dilution
Working Conditions:	IF: 1:500 IP: not recommended For best results of WB and IF, and other assays (e.g.: Dot and ELISA), please determine optimal working dilution by titration test

Images:

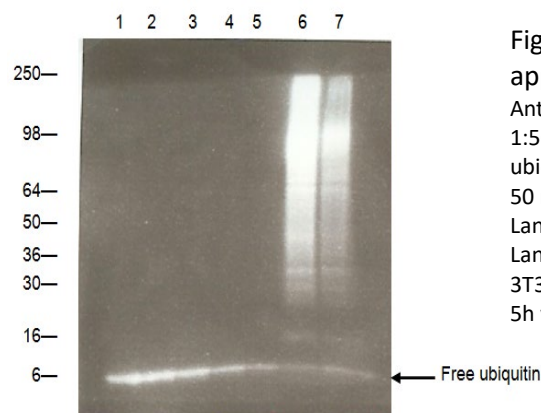


Figure 1 : Western blot applications

Anti-Ubiquitin (P4D1) was used at a 1:500 dilution. Bovine thymus ubiquitin was run as follows; Lane 1- 50 ng, Lane 2-25 ng, Lane 3-12.5 ng, Lane 4-6.25 ng, Lane 5-3.12 ng. Lanes 6 & 7 represent 20 μ g of Swiss 3T3 cell lysate from cells treated for 5h with 10 μ M MG-132 (Lane 6) or



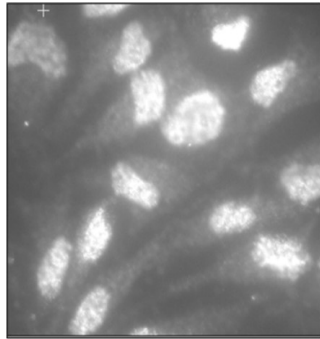


Figure 2: IF of HeLa cells

HeLa cells were stained and visualized by fluorescence microscopy. Ubiquitin targeted cytoplasmic and nuclear proteins and free ubiquitin were stained using Anti-Ubiquitin (P4D1) at 1:500 dilution.

Storage:

Store at -20°C. Aliquot is not necessary.

Note:

This product is manufactured by Cytoskeleton, distributed through UBPBio.

